

# Automated cfDNA Extraction Solution

To facilitate biomarker research, translation and application.

## Project Workflow

Cell-free  
liquid  
biopsy



cfDNA Extraction  
(Magnetic cfDNA kit  
+ Automated Nucleic  
Acid extractor)



qPCR, or library prep  
+ NGS sequencing



Analysis

## TIANGEN BIOTECH (BEIJING) CO., LTD

Address: South Section, 3rd Floor, Building 20, East Zone, Yongyou Industrial Park, Yongfeng Base, Haidian District, Beijing, China

Website: <https://en.tiagen.com/>

### North America

Email: [us.sales@tiagen.com](mailto:us.sales@tiagen.com)

### Asia, Europe, South America, Africa, Oceania

Email: [people@tiagen.com](mailto:people@tiagen.com)

LinkedIn



facebook



## Ready to use full-range automatic cfDNA extraction solution

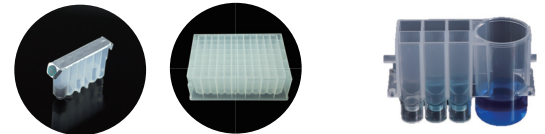
### Magnetic Circulating DNA Maxi Kit

- Applicable for **300 µl – 8 ml** plasma cfDNA extractions.
  - Compatible with Streck BCT formulations & K<sub>2</sub> EDTA collection tube.
  - High cfDNA **yield and purity** for most sensitive downstream applications (e.g. qPCR, NGS, etc.).
  - Averaged 80% extracted fragments sized between **80-400 bp**.
- Package available in **bulk and prefilled** format.

Bulk Reagent Kit



Prefilled Kit



S16 cartridge and plate  
(input 300-600 µl)

SL16 cartridge  
(input 1-3.5 ml)

### TGuide Automated Extractor

- Low to high throughput instrument models available.
- Benchtop size for academic laboratories.
- Customizable programs and protocols.

### Good performance

Model	Starting	Eluent (µl)	Throughput	Yield (ng)	Application
S16	300-600 µl	60~100	1-16	2.5~3.2	Non-invasive prenatal testing (NIPT)
SL16	1-3.5 ml	60~100	1-16	16~120	Immune and infectious disease
S24	2-8 ml	60~100	1-24	24~500	Cancer diagnosis and early screen



TGuide  
S16

TGuide  
SL16

TGuide  
S96/S24

### Good yield and purity of cfDNA (8 ml plasma input)

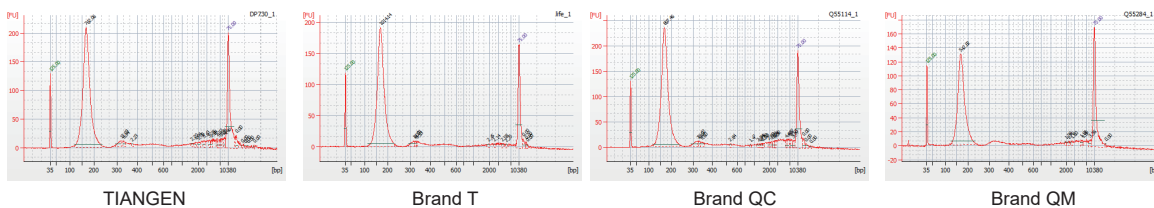


Figure 1. Comparison of cfDNA yields from different brands. Brand T, QC and QM are all well known global brands.

### Good performance in Library prep (8 ml plasma input)

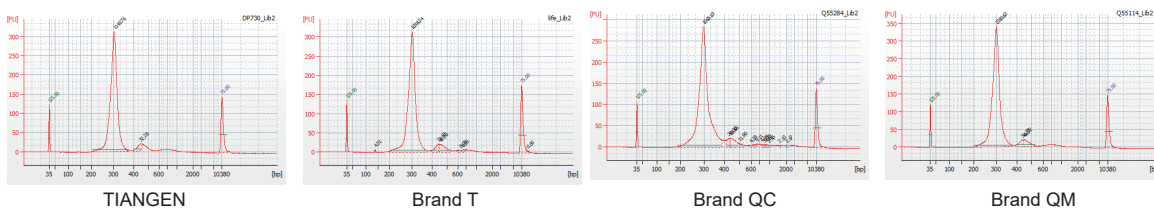


Figure 2. Comparison of cfDNA library prep yields from different brands. Brand T, QC and QM are all well known global brands.

### Good size distribution of purified cfDNA (8 ml plasma input)

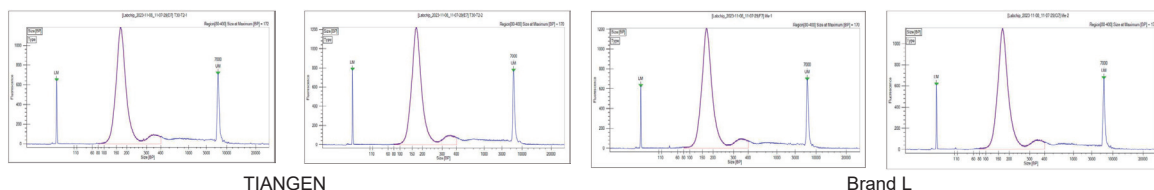


Figure 3. Comparison of extracted fragments size distribution from different brands. Brand L is a well known global brands.